



The CCCApply International Application

2018 CCCApply Annual Workshop
Wednesday, March 28, 2018
Orange Coast College

Presenters:

Olivia Alvarado, Business Analyst, LACCD, I.T.

Anna Salazar, Registrar, East Los Angeles College, A&R

In collaboration with: Mike Severa, Programmer, LACCD, I.T.

Los Angeles Community College District (LACCD)



- East Los Angeles College
- Los Angeles City College
- Los Angeles Harbor College
- Los Angeles Mission College
- Los Angeles Pierce College
- Los Angeles Southwest College
- Los Angeles Trade-Tech College
- Los Angeles Valley College
- West Los Angeles College



Before the CCCApply International Application

Manual Process

- Each college had their own international paper application for admission.
- Each college had their own program application.
- Each college had their own business process.

SEVIS

- Each college uses the SEVIS Real-Time Interactive (RTI) system to manage SEVIS information.



After the CCCApply International Application

CCCApply International Application User Interface

- LACCD applicants use the CCCApply international application.
- LACCD stores application data in our student information system.
- The intention of using the CCCApply international application is to standardize matriculation for international students.

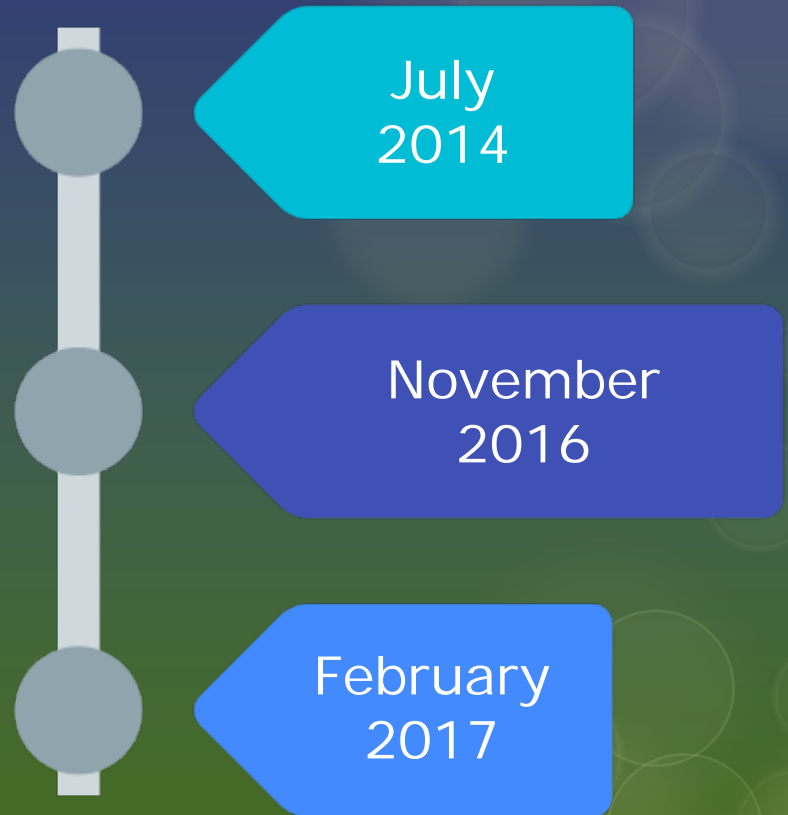
SEVIS

- With the use of PeopleSoft, we are able to use SEVIS batch processes.



LACCD Application and SIS Timeline

During this span of time LACCD experienced three important events.





The CCCApply Standard Application

LACCD deployed the OpenCCCApply standard (domestic) application.

July
2014

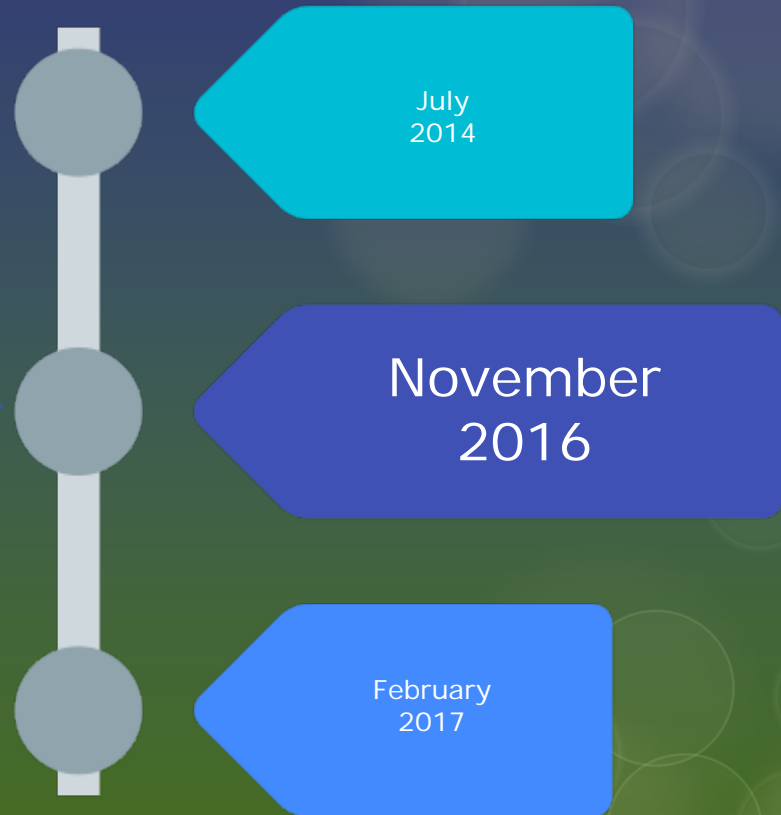
November
2016

February
2017

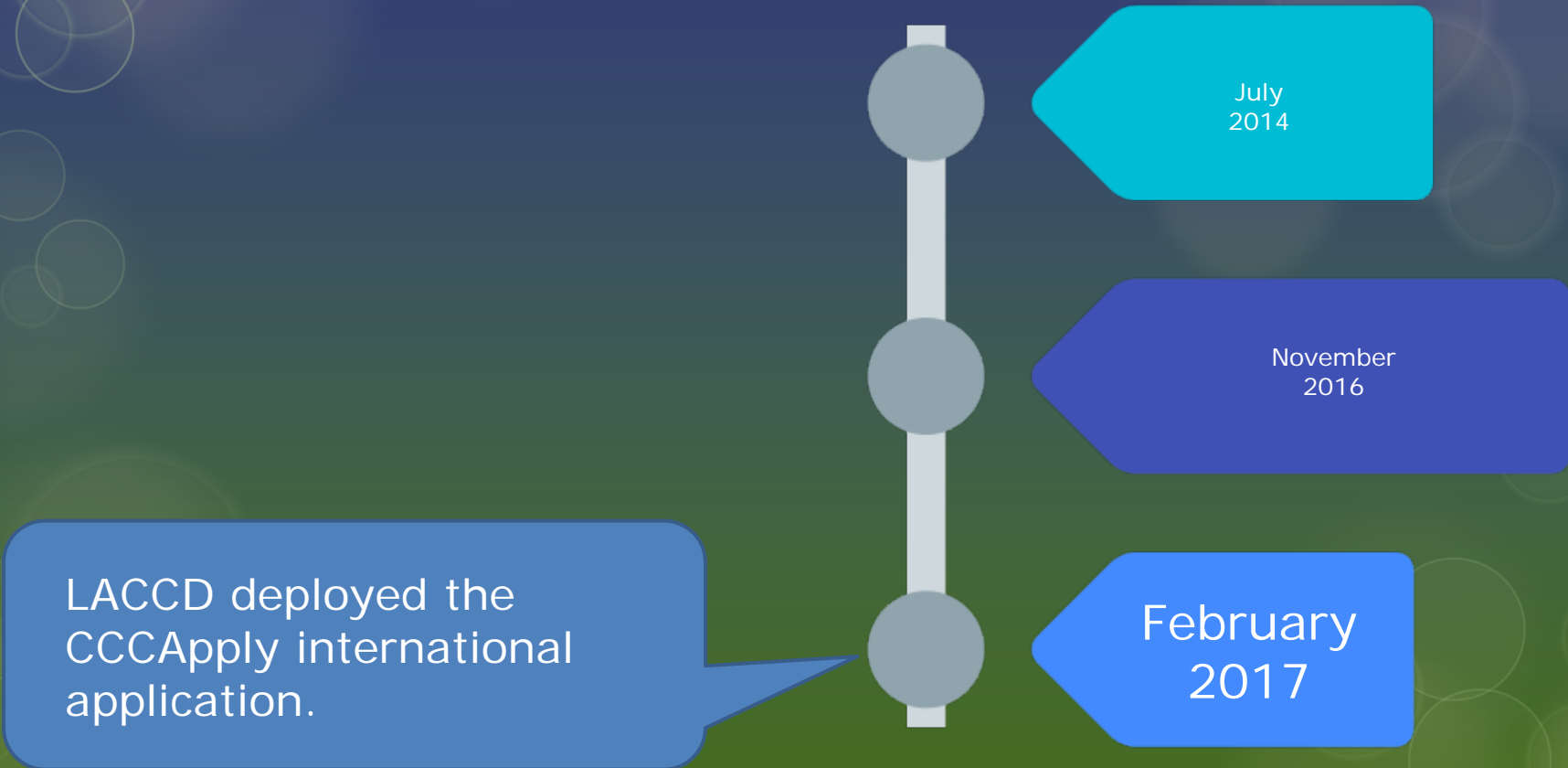


Student Information System

LACCD converted from a home grown student information system to PeopleSoft Campus Solutions.



The CCCApply International Application



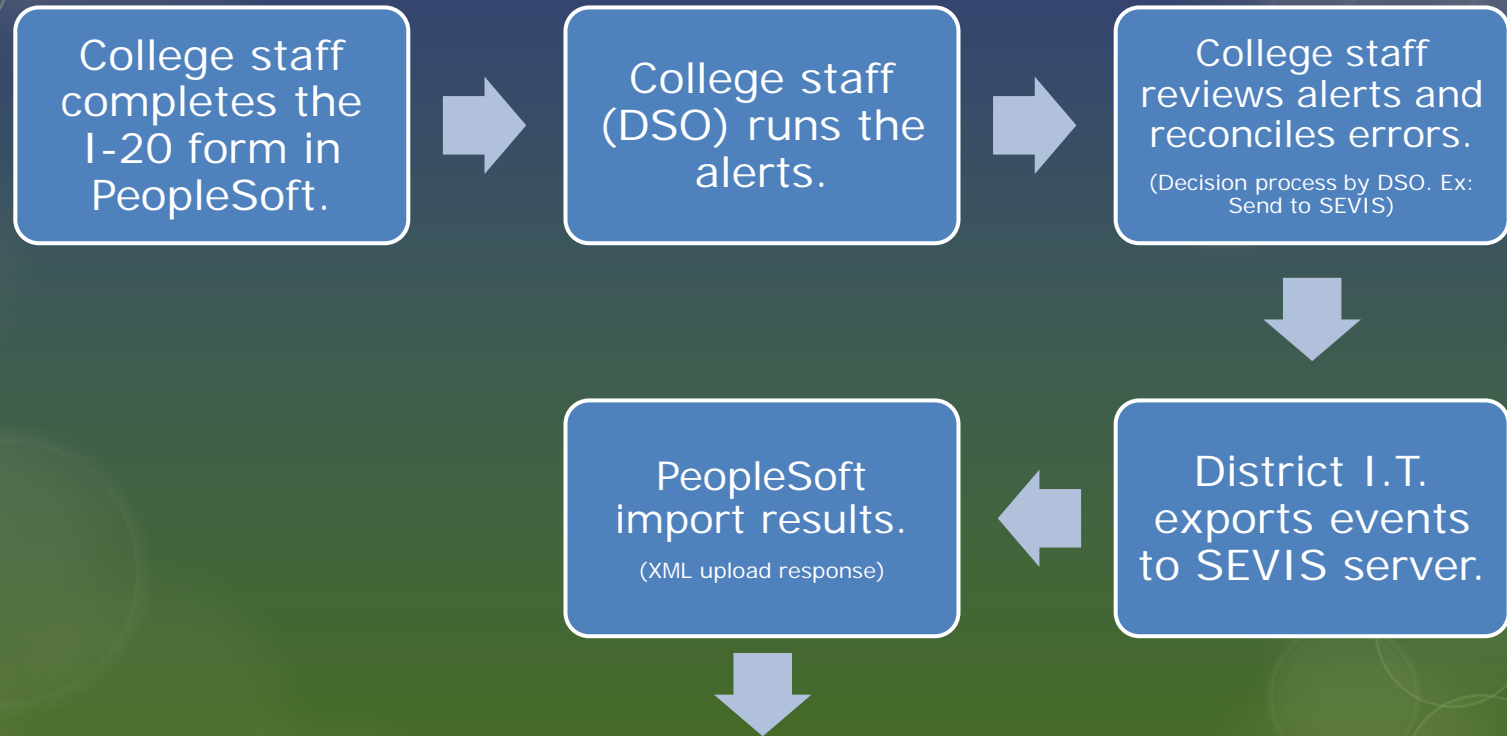


International Application Processing

- CCCApply international applications post to PeopleSoft with an international application center in order to distinguish them from the standard (domestic) applications.
- An application fee is assessed in PeopleSoft.
- LACCD auto assigns checklist items and communications using PeopleSoft 3Cs functionality.
- Staff manually admits and matriculates the international student application.



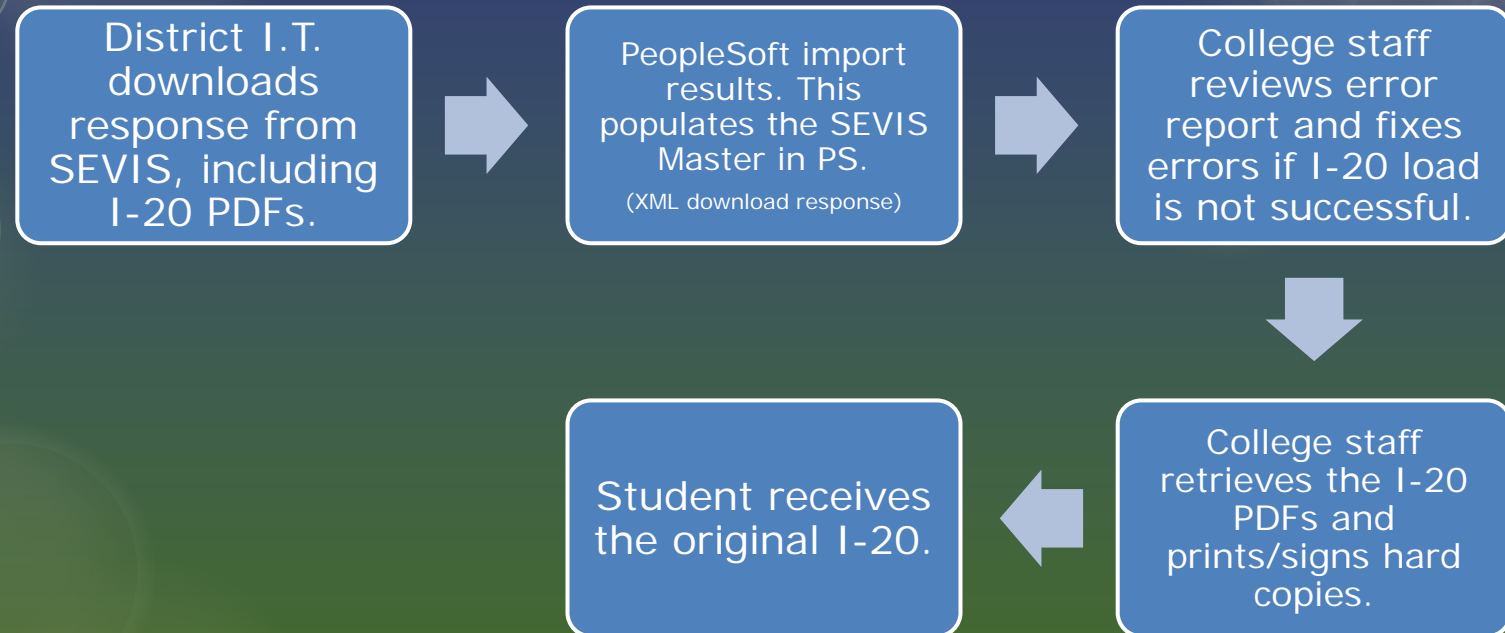
SEVIS Processing Using PeopleSoft





SEVIS Processing Using PeopleSoft

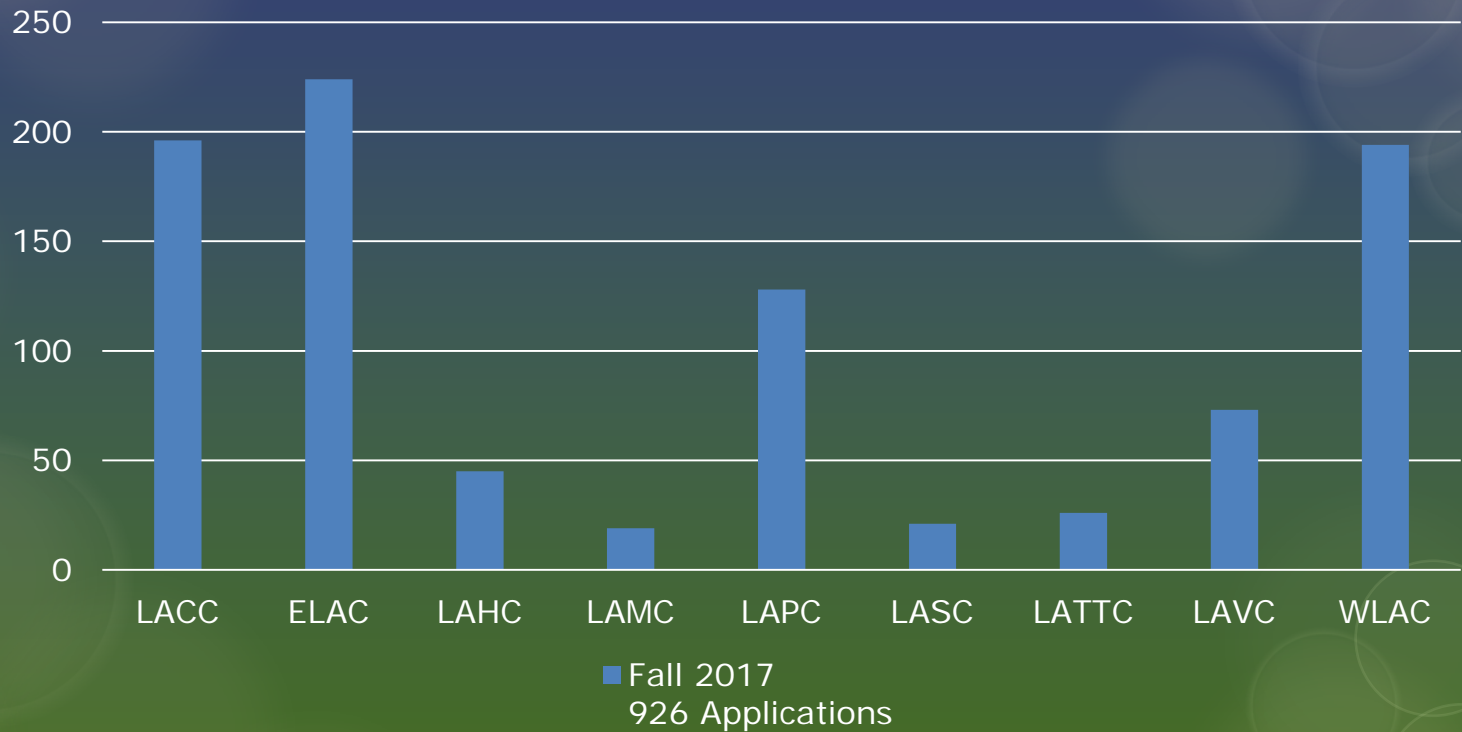
(Continued)





Fall 2017 CCCApply International Application Count

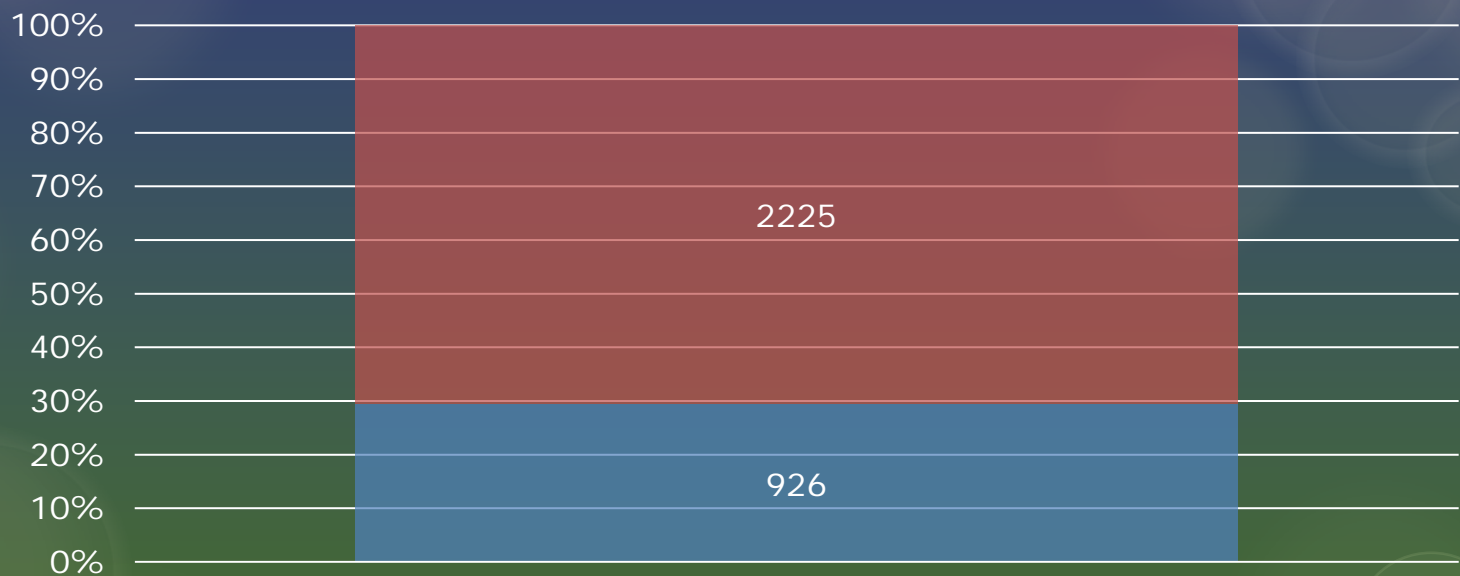
Los Angeles Community College District





Statewide CCCApply International Application Count

2017



3151 Statewide Applications

- LACCD International Applications Fall 2017
- Non-LACCD International Applications Spring and Fall 2017



International Data Elements

(That are not in the Standard Application)

- Agent company information.
- Applicant's major at college/university, the language in which instruction was given, and the college non U.S. province {1 – 4}
- Country of birth and citizenship status
- I-94 information
- Number of dependents and bio-demo information {1 – 10}
- SEVIS data elements
- Emergency contact information
- English proficiency information
- Parent/Guardian information
- Practical training information
- Primary language



LACCD Supplemental Questions

- The Los Angeles Community College District supplemental questions are standardized.
- Our International Student Coordinators agreed and provided the following seven districtwide supplemental questions.
- This page is maintained by the District I.T. department.



LACCD Supplemental Questions

1. Assessment Information

Yes No

a. In the past two years, have you completed both an English and Math Assessment at a California Community College? If yes, enter date (MM/DD/YYYY).

mm/dd/yyyy

Yes No

b. Have you completed both an English and Math course at a regionally accredited College/University?

2. Gender

Enter a gender:

-- Select --
-- Select --
Male
Female



LACCD Supplemental Questions

- Athletics Title IX MIS reporting.
- Options: badminton, baseball, basketball, bowling, cross country, fencing, football, golf, gymnastics, lacrosse, sand volleyball, soccer, softball, swimming, tennis, track & field, volleyball, water polo, wrestling, other

3. Are you interested in participating in a sport?

Yes No

3a. If yes, please select all that apply below:

Badminton

-- Select --
-- Select --
Intercollegiate Team
Intramurals
Physical Education

Basketball

-- Select --

Bowling

-- Select --

Cross country

-- Select --



LACCD Supplemental Questions

4. Permission to Release Types of Student Information **DIRECTORY INFORMATION:** Name, city of residence, participation in officially recognized activities and sports, weight and height of athletic teams members, date of attendance, degrees and awards received, and the most recent previous educational institution attended. **COLLEGE FOUNDATION INFORMATION:** Name, address, and telephone number. **FOUR-YEAR COLLEGE INFORMATION:** Name, address, and telephone number. **MILITARY RECRUITING INFORMATION:** All information outlined in 'Directory information,' plus, address, telephone number, date of birth, and major field of study. Be sure to read the Full Statement of Consent before deciding whether or not to grant your consent. You may find the Full Statement of Consent in the Consent tab of the application. To change your authorization, notify the college admissions office in writing.

- I do not permit the college to release directory information.
- I do not permit the release of my information to the College Foundation. (Leave blank if you want information on LACCD Foundation scholarships, grants and networking opportunities).
- I do not permit the release of my information to four-year colleges.
- I do not permit the release of information to the military.

5. Self-Emergency Contact Information In the event of an on-campus emergency, the college will send out alert notifications via text or email. Please provide your U.S. cell phone number. Note: It is important to provide the college with your U.S. cell phone number when you receive one.

Contact's phone number
(xxx-xxx-xxxx):



LACCD Supplemental Questions

6. Sources of Financial Support. What is your source of financial support? Mark all that apply.

Personal Funds - Documents required: Bank balance verification letter signed and stamped by an officer of your bank.

Amount Guaranteed per Year

Parent Sponsor - Documents required: Bank balance verification letter signed and stamped by an officer of your bank. Financial sponsor must complete information below.

Amount Guaranteed per Year

Scholarship/Grant - Documents required: Copy of your award letter signed by your sponsoring organization or government office.

Amount Guaranteed per Year

7. Enrollment Objective

Please choose one enrollment objective:

-- Select --

-- Select --

I will be enrolled full-time at your college

I will be enrolled part-time at your college while attending high school in the US

I will be enrolled part-time at your college while attending another college in the US

I will be enrolled part-time at your college while attending an English Language school in the US

Save



Benefits of Using the CCCApply International Application

- LACCD captures all international data elements from CCCApply into PeopleSoft.
 - Minimizes manual data input in the creation of the I-20 form.



LACCD Challenges

LACCD faces challenges with the entry level question.

- The CCCApply International Application does not have any concurrent enrollment options in the Education page of the application.
- LACCD Concurrent enrollment definition:
 - Enrolling in high school (or lower grade) and college at the same time
 - Enrolling in a LACCD college and a non-LACCD college at the same time.

Entry Level

Your enrollment status as of Feb 04, 2018

First-time student at a U.S. college

-- Select enrollment status --

First-time student at a U.S. college

Transfer student from another U.S. college

Returning to this college



LACCD Entry Level Workaround

- The Los Angeles Community College District accepts international concurrent enrollment for high school or college and captures this information by using a supplemental question.

7. Enrollment Objective

Please choose one enrollment objective:

-- Select --

-- Select --

I will be enrolled full-time at your college

I will be enrolled part-time at your college while attending high school in the US

I will be enrolled part-time at your college while attending another college in the US

I will be enrolled part-time at your college while attending an English Language school in the US

Save



LACCD Challenges

Expired Visa

- CCCApply does not accept an expired visa date.
- LACCD accepts expired visas only if the student is already in the U.S. and wants to transfer.
 - The student needs a valid I-20 and passport

D/S Duration of Status

- Applicants are not able to complete the international application when their I-94 does not have an expiration date. Even after selecting the D/S Duration of Status (with no expiration date) checkbox.
 - OpenCCC Support Ticket 368331
 - Workaround: Students are entering a future date in order to bypass the error message.



Recommended Improvements

- What feedback do you have for the CCCApply Steering Committee to improve the international application?
 1. It would be practical if the CCCApply International Application was continuously updated to be in compliance with Homeland Security data gathering requirements.
 2. Can the international application be set up with concurrent enrollment options like the domestic application? Could this be needed for MIS SB11?
 3. If an I-94 can have a blank expiration date then the validation needs to be removed from the international application.



Contact Information

Anna Salazar

Registrar, Admissions and Records

East Los Angeles College

salazaal@elac.edu

Mike Severa

Programmer

LACCD, I.T.

SeveraMJ@email.laccd.edu

Olivia Alvarado

Business Analyst, Admissions Module

LACCD, I.T.

alvarao@email.laccd.edu



My Path International Application

Presenter: Mike Caruso
Product Manager, My Path
CCC Technology Center

MyPath Workflow

- MyPath is building further integration into the CCCApply process, specifically designed to help prospective students utilize MyPath's tools and resources as a part of selecting the college they are applying to. MyPath will be able to assume responsibility for CCCApply.org's web traffic, providing a more complete, information rich path to the application. Existing college application paths are unaffected.

Document Upload Service

- MyPath will be able to provide file upload and download functionality to students following the application, and will tie this functionality to the rules and messaging services. Colleges will be able to prompt specific types of students to upload certain files based on their application responses, and once uploaded, MyPath will notify the correct college staff that student files are available to be retrieved.

Messaging Automated Nudges

- Colleges can now set MyPath to automatically remind students to return to the path in order to complete unfinished tasks. Reminders will be sent via the students selected communications channels (email, SMS, MyPath Inbox).